

Yard Duty and Supervision Policy



HELP FOR NON-ENGLISH SPEAKERS

If you need help to understand the information in this policy, please contact Drouin Secondary College on 03 5625 1002 or drouin.sc@education.vic.gov.au.

PURPOSE

To ensure school staff understand their supervision and yard duty responsibilities.

SCOPE

This policy applies to all teaching and non-teaching staff at Drouin Secondary College and the Blackwood Bratauloong Centre for Adolescent Development, including education support staff, casual relief teachers and visiting teachers.

POLICY

Appropriate supervision is an important strategy to monitor student behaviour and enables staff to identify and respond to possible risks at school as they arise. It also plays a vital role in helping schools to discharge their duty of care to students.

The principal is responsible for ensuring that there is a well organised and responsive system of supervision and yard duty in place during school hours, before and after school, and on school excursions and camps and other school activities.

School staff are responsible for following reasonable and lawful instructions from the principal, including instructions to provide supervision to students at specific dates, times and places. Supervision should be undertaken in a way that identifies and mitigates risks to child safety.

Before and after school

Blackwood Campus grounds are supervised by school staff from 8:40am until 3.00pm. Outside of these hours, school staff will not be available to supervise students and no transport available unless prior arranged.

If a student arrives at school before supervision commences at the beginning of the day, the principal or nominee staff member will, as soon as practicable, follow up with the parent/carer to:

- advise of the supervision arrangements before school
- request that the parent/carer make alternate arrangements.

If a student is not collected before supervision finishes at the end of the day, the principal or nominee staff member will consider whether it is appropriate to:

- attempt to contact the parents/carers
- attempt to contact the emergency contacts
- place the student in an out of school hours care program (if available and the parent consents)
- contact Victoria Police and/or Child Protection to arrange for the supervision, care and protection of the student.

Yard duty

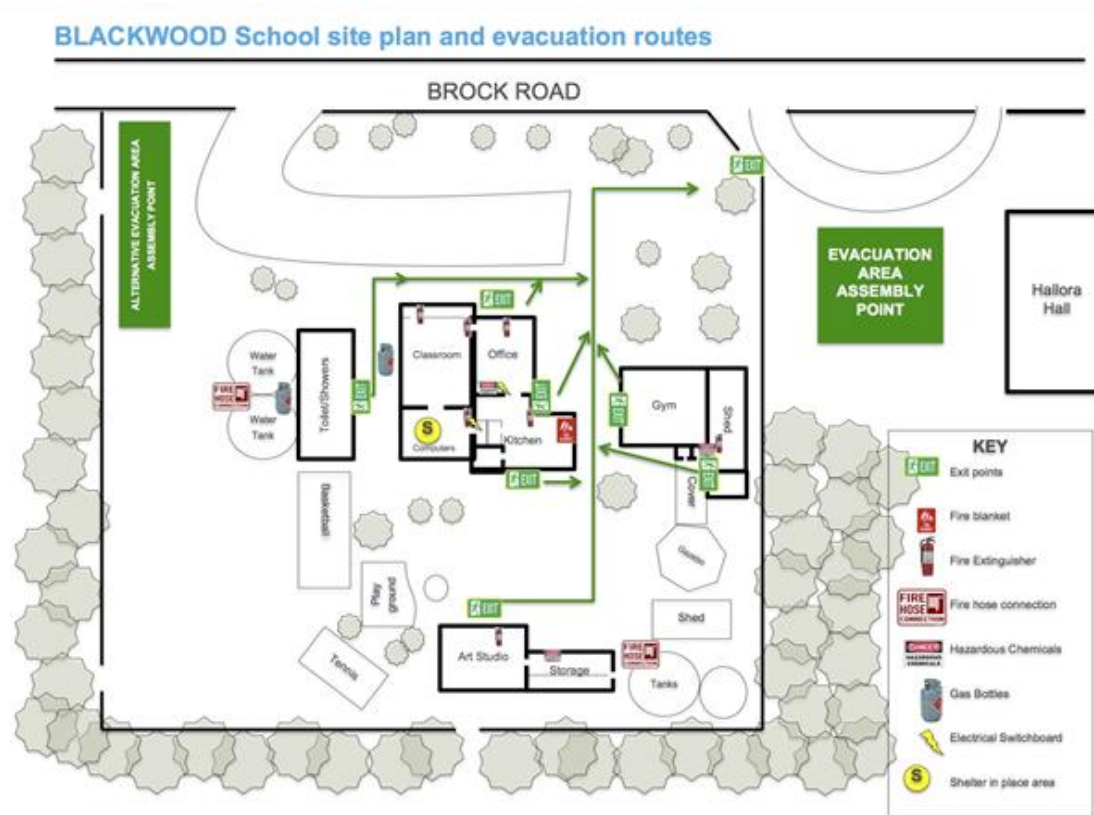
Staff at Blackwood Bratauloong Centre for Adolescent Development are expected to assist with yard duty supervision daily.

The Blackwood program, school staff will be designated a time allocation for yard duty and required to supervise the Blackwood grounds.

Yard duty zones – Blackwood Campus

The school grounds from Brock Rd to the nature trail are within the yard duty zone. All areas outside the main fence line is classified out of bounds.

See Map Attached



Yard duty equipment

School staff must:

- wear a provided safety/hi-vis vest whilst on yard duty. Safety/hi-vis vests will be stored in Staff Corridor
- carry the yard duty first aid bag at all times during supervision. The yard duty first aid bag will be stored in main office.
- Be familiar with the yard duty information pack containing student health and safety information stored

Yard duty equipment must be returned after the period of supervision or handed to the relieving staff member.

Yard duty responsibilities

Staff who are rostered for yard duty must remain in the designated area until they are replaced by a relieving teacher.

During yard duty, supervising staff must:

- methodically move around the designated zone ensuring active supervision of all students
- where safe to do so, approach any unknown visitor who is observed on school grounds without a clear legitimate purpose
- be alert and vigilant
- intervene immediately if potentially dangerous or inappropriate behaviour is observed in the yard
- enforce behavioural standards and implement appropriate consequences for breaches of safety rules, in accordance with any relevant disciplinary measures set out in your school's *Student Engagement and Wellbeing* policy

- ensure that students who require first aid assistance receive it as soon as practicable
- log any incidents or near misses as appropriate on Compass
- if being relieved of their yard duty shift by another staff member (for example, where the shift is 'split' into 2 consecutive time periods), ensure that a brief but adequate verbal 'handover' is given to the next staff member in relation to any issues which may have arisen during the first shift.

If the supervising staff member is unable to conduct yard duty at the designated time, they should contact the Lead Teacher in charge of Daily Organiser with as much notice as possible prior to the relevant yard duty shift to ensure that alternative arrangements are made.

If the supervising staff member needs to leave yard duty during the allocated time, they should contact the Lead Teacher or Business Administration but should not leave the designated area until the relieving staff member has arrived in the designated area.

If a relieving or next staff member does not arrive for yard duty, the staff member currently on duty should send a message to the office/Daily Organiser and not leave the designated area until a replacement staff member has arrived.

Students will be encouraged to speak to the supervising yard duty staff member. If they require assistance during recess or lunchtime.

Classroom

The classroom teacher is responsible for the supervision of all students in their care during class.

Staff are to ensure that a clear line of sight into the classroom is maintained at all times, including: ensuring blinds/curtains are open. Staff should not meet with Students 1:1 in an enclosed space.

If a teacher needs to leave the classroom unattended at any time during a lesson, they should get assistance for other staff. The teacher should then wait until another staff member has arrived at the classroom to supervise the class prior to leaving.

School activities, camps and excursions

The principal and leadership team are responsible for ensuring that students are appropriately supervised during all school activities, camps and excursions, including when external providers are engaged to conduct part or all of the activity. Appropriate supervision will be planned for school activities, camps and excursions on an individual basis, depending on the activities to be undertaken and the level of potential risk involved, and will follow the supervision requirements in the Department of Education and Training [Excursions Policy](#).

Digital devices and virtual classroom

Drouin Secondary College and Blackwood Campus follows the Department's [Digital Technologies - Responsible Use Policy](#) with respect to supervision of students using digital devices.

While parents are responsible for the appropriate supervision of students accessing virtual classrooms from home:

- student attendance will be monitored daily
- any wellbeing or safety concerns for the student will be managed in accordance with our usual processes – refer to our Student Wellbeing and Engagement Policy and our Child Safety Responding and Reporting Policy and Procedures for further information.

Students requiring additional supervision support

Sometimes students will require additional supervision, such as students with disability or other additional needs. In these cases, the principal or delegate will ensure arrangements are made to roster additional staff as required. This may include on yard duty, in the classroom or during school activities.

Workplace learning programs

When students are participating in workplace learning programs, such as work experience, school-based apprenticeships and traineeships, and structured workplace learning, the safety and welfare of the student is paramount. Organising staff are required to follow all applicable Department of Education and Training policies and guidelines in relation to off-site learning, including policy and guidelines on the safety and wellbeing of students.

Refer to:

- [Structure Workplace Learning](#)
- [School Based Apprenticeships and Traineeships](#)
- [Work Experience](#)
- [School Community Work](#)

Supervision of student in emergency operating environments

In emergency circumstances our school will follow our Emergency Management Plan, including with respect to supervision.

In the event of any mandatory period of remote or flexible learning our School will follow the operations guidance issued by the Department.

COMMUNICATION

This policy will be communicated to our school community in the following ways:

- Included in staff induction processes
- Discussed at staff briefings or meetings, as required
- Made available publicly on our school website
- Made available in hard copy from school administration upon request

Information for parents and students on supervision before and after school is available on our school website and parent reminders are sent at the beginning of each term in our school newsletter.

FURTHER INFORMATION AND RESOURCES

This policy should be read in conjunction with the following policies on the Department’s Policy and Advisory Library (PAL):

- [Child Safe Standards](#)
- [Cybersafety and Responsible Use of Technologies](#)
- [Duty of Care](#)
- [Excursions](#)
- [School Based Apprenticeships and Traineeships](#)
- [School Community Work](#)
- [Structured Workplace Learning](#)
- [Supervision of Students](#)
- [Visitors in Schools](#)
- [Work Experience](#)

POLICY REVIEW AND APPROVAL

Policy last reviewed	March 2026
Approved by	Principal – Elizabeth Godwin
Next scheduled review date	Before February 2028

This policy will also be updated if significant changes are made to school grounds that require a revision of Drouin Secondary College’s yard duty and supervision arrangements.